



creating an experience through
Art & Space

Playful Puppy | Dallas, Texas



Brad Oldham Sculpture



We are Christy Coltrin
& Brad Oldham

**Our work begins and ends with
imagination and perseverance.**



Brad Oldham Sculpture

We uncover the essence of a place to find and create the story
that guides us as we create site-specific sculpture.



SkaterBIRD

With 20 years of experience in the fine-art arena, Brad Oldham Sculpture specializes in creating placemaking sculptures, architectural features and tabletop editions of our public installations. We believe that by using our creativity to build upon the uniqueness of each environment, we produce tangible experiences that allow viewers to hold stories in their hands and hearts that they will associate with a particular time and place.

our mission

We aim to demystify sculpture by increasing accessibility and providing opportunities for enjoyment of such artwork in everyday life. We strive to create emotional connections and experiences that expand and enrich people's lives in the tangible way that sculpture can.

our vision

Our vision is to bring sculpture directly to people – in their daily play, work, travel, and relaxation time – thereby encouraging personal engagement with this interactive art form.



Brad Oldham Sculpture

Site-Specific Placemaking Sculpture



Leaping Rabbit



Building Passages



The Great One in Brantford, Ontario



SpeedBIRD



Shattered



Better to Give



Birth of a City



The Traveling Man-Walking Tall



Brad Oldham Sculpture

Integrated Sculpture & Architectural Features



Canopy, Austin, Texas



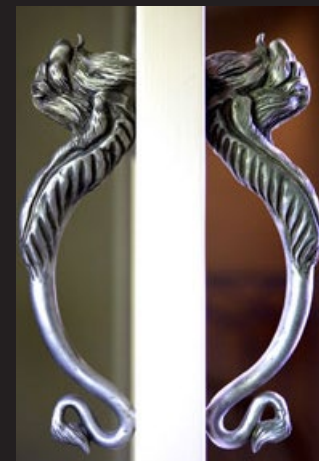
Renaissance Hotel Washington DC, Architectural Feature



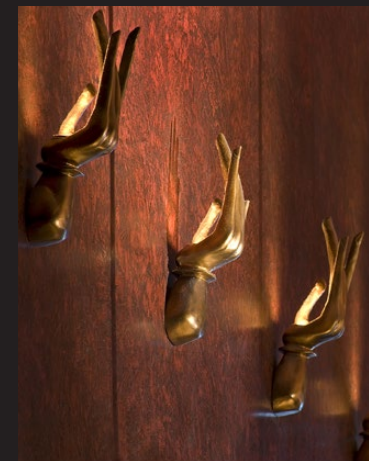
Fractured Column, Private Residence



Fishtail, The Bellagio, Las Vegas



Griffin Hardware



Buddha Hands, The Palms, Las Vegas



Brad Oldham Sculpture

Sculptor, Placemaker, Fearless Fabricator, Business Owner

Brad Oldham



Brad Oldham Sculpture

Artist, Writer, Storyteller, Creative Director, Business Owner

Christy Coltrin



Brad Oldham Sculpture

Every Brad Oldham sculpture begins with a story —
for commissioned works and limited-edition collections alike.



Great Potential | a hand sculpted, lost-wax cast bronze sculpture.

Crescent Pointe, Charelston, South Carolina

medium: Stainless Steel, Marble, and LED Lights

dimensions: 24' x 40' x 15'

year completed: 2020

description: A family of ducks paddles up the river flowing toward the crescent moon when the flock notices the duck ahead of them about to take flight. *Crescent Pointe* captures the retelling of a parable on the lasting importance of one's actions. This 24-foot-tall, internally-lit installation is to remind us to put our skills and talents into action.



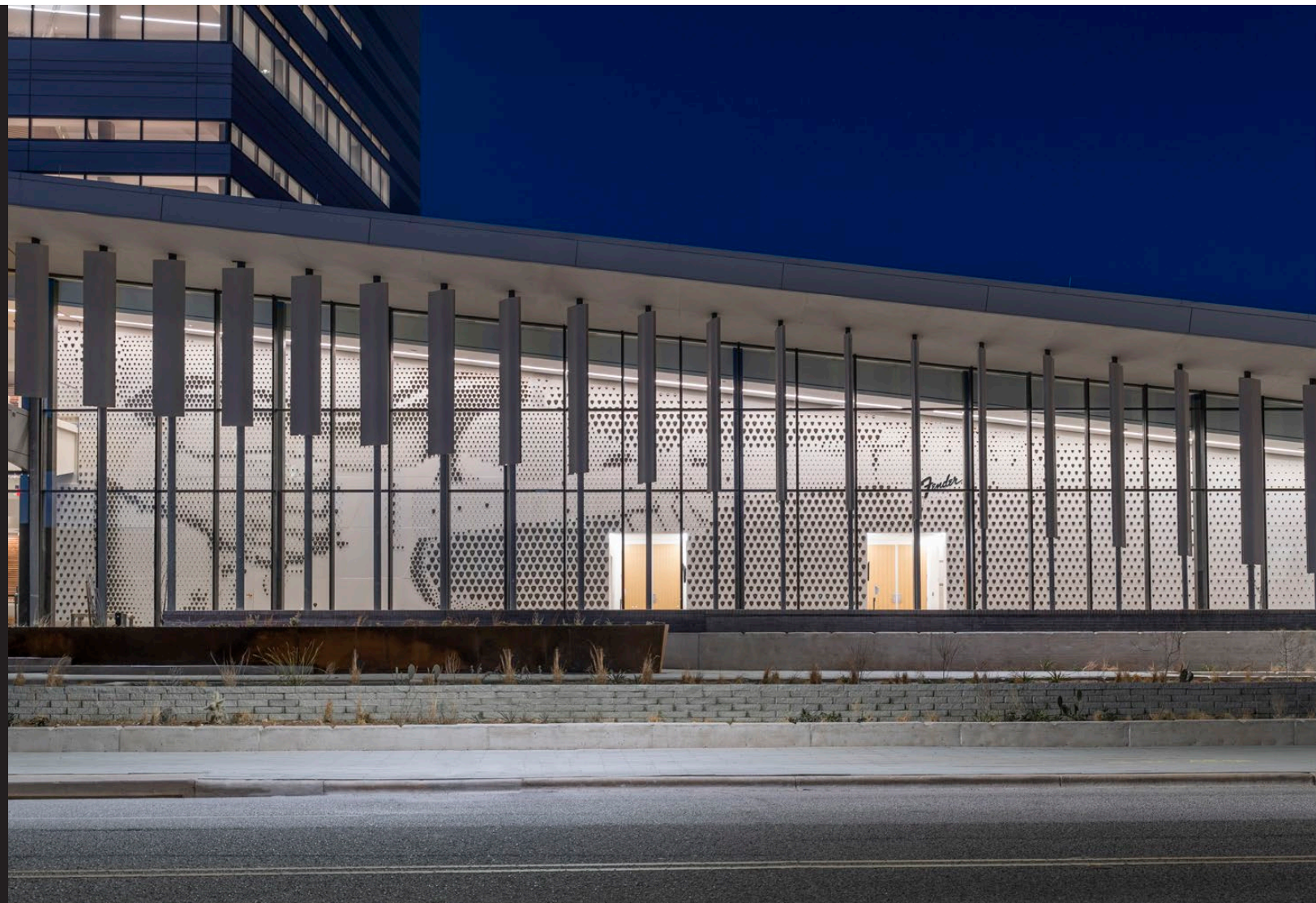
Buddy Holly Donor Pick Wall Sculpture, Lubbock, Texas

medium: Aluminum

dimensions: 30' x 120' x 6"

year completed: 2020

description: There are nearly 9,000 die-cast aluminum guitar picks in eleven different size across the span of 120 feet that when assembled show a tight-crop image of the iconic image of Buddy Holly strumming his Fender Stratocaster. The wall-mounted sculpture is not only a stunning image from afar and up close, it is also used by the Lubbock Entertainment Performing Arts Association for recognizing important donors.



Rabbits of Paris Mountain, Greenville, South Carolina

medium: Stainless Steel

dimensions: 14' x 7' x 6' (*Stretch* only)

year completed: 2020

description: Three rabbits and a dogwood tree comprise the sculptural installation titled *Rabbits of Paris Mountain*. *Stretch* is shown pulling a pedal from the dogwood tree while *Scratch* and *Superman* are play in the internal courtyard. This playful installation reminds us of the importance of truth, beauty, and goodness. Reach for the heavens and consider what elevates you.



Great Potential, Mercersburg, Pennsylvania

medium: Bronze

dimensions: 4' x 8' x 3'

year completed: 2020

description: Two squirrels have found two oversized acorns that represent the great potential of the student body on this high school campus. One squirrel is waving pencils as he conducts the business of passing-by students while the other squirrel embodies the school spirit by singing the alma mater. This installation is just outside the dining hall where students see it every day.



Stacked Friends, Dallas, Texas

medium: Stainless Steel & Cast Stone

dimensions: 16' x 12' x 8'

year completed: 2020

description: Best friends lift each other up, and these animals show that simply playing together in a park can also be brilliant fun. The utterly kind dog is game to let his rabbit and bird friends sit on his head. What's better than best friends? Stacked friends.



Shattered, Arlington, Texas

medium: Wood, Aluminum, Resin

dimensions: 7.5' x 14' x 5"

year completed: 2020

description: Famed Texas Rangers Baseball pitcher, Nolan Ryan is baseball's all-time leader in strikeouts with more than 5,000 in his incredible career. Quite simply, Ryan shattered baseball records and earned a reputation as one of the best pitchers of all time. His iconic image on the pitching mound is shown here using baseballs surrounded by a burst of shattered bats to represent the many records he broke.



Passages, Dallas, Texas

medium: Stainless Steel

dimensions: 32' x 9' x 11'

year completed: 2019

description: The uplifting, flowing shapes of *Passages* is designed to unify Energy Square in celebration of its diversity of people, businesses, and buildings. The sculpture's silhouette resembles a flickering flame as a nod to energy concepts for which this neighborhood is known. The top and bottom faces glow at night as well.



Buliding Passages, Dallas, Texas

medium: Stainless Steel

dimensions: 17' x 25' x 6'

year completed: 2019

description: The emergent shapes of *Building Passages* speaks to the unbridled brilliance of the wildest minds that, when tapped, learn to contribute to this urban community. The Morse Code message in lights on the underside of the arch welcomes visitors and points to the 2nd nearby sculpture *Passages*.



Lulu May's Mark, Plano, Texas

medium: Stainless Steel

dimensions: 12' x 10' x 2'

year completed: 2019

description: During the Great Depression, the hungry placed an X on the curb of Lulu May Perot's home to indicate that it was a place they would be fed. She said they are "just like us, just down on their luck." Her daughter, Bette, continued the efforts by supporting the start of the North Texas Food Bank. *Lulu May's Mark* and the North Texas Food Bank Plano campus are dedicated in their honor by Lulu May's son, H. Ross Perot, and his family. This sculpture signals that this is where good food and good people can be found.



Dynamic DNA, Dallas, Texas

medium: Stainless Steel

dimensions: 24' x 10' x 11'

year completed: 2019

description: DNA (deoxyribonucleic acid) is the information system needed to produce and regulate life functions, and its wonderful spiral shape provides the inspiration for this 24-foot-tall sculpture. The fluid shapes and reflective material presented in *Dynamic DNA* are well suited for the water setting and invite the viewer to consider the beauty of art and science on this educational campus.



Twist, Dallas, Texas

medium: Stainless Steel and Bavarian Granite

dimensions: 8'8" x 8' x 30'

year completed: 2018

description: For Park District in downtown Dallas, Brad Oldham and Christy Coltrin rotated a conventional water-wall concept to capture and accentuate the surrounding environment while encouraging interaction with the viewer. *Twist* was meticulously handcrafted by hammering the stainless steel into shape and then hand sanding and polishing the sculpture to a highly reflective finish. The sculpture stands on a custom water feature of Fuerstenstein granite from the Bavarian region of Germany. For the artists, this sculpture is an invitation to see opportunities that might be around the bend.



Running with the Moon, San Antonio, Texas

medium: Stainless Steel, Steel, and Bronze

dimensions: 35' x 36' x 8'

year completed: 2018

description: *Running with the Moon* is an installation of a boy running along the river, pulling a crescent-shaped kite cantilevered over the water. The moon is lifted by the residents' good work and deeds, while the boy sculpture represents the future pushing forward. The two intertwined forces "propel" the moon above the water.

Viewers will see that the 16-foot-diameter kite is elevated 19 feet off the ground and is comprised of 508 handmade butterflies. The brush-finished butterflies are 20% mirror-polished to contrast with the bronze material in the boy sculpture and allowing them to dance in the natural and internal lights. At night, the moon glows as the light inside escapes under the butterfly wings.



Brooks Butterfly, San Antonio, Texas

medium: Stainless Steel

dimensions: Kaleidoscope of eight sculptures in three sizes: 3.5' x 5' x 6' (2 sculptures) | 2.5' x 4' x 3' (4 sculptures) | 1.75' x 3' x 2' (2 sculptures)

year completed: 2018

description: The butterflies have extended wings and dream of flight as their caterpillar body is still transforming to become a sleek flying shape. It is the moment before flight that is filled with the hopes and joy for what lies ahead that Brad Oldham and Christy Coltrin wanted to capture. The eight sculptures in three sizes are installed in clusters and alone throughout the linear park. Monarch butterflies migrate through this park every fall on their way to Mexico.



SkyLINK at the Greensboro Children's Museum, Greensboro, North Carolina

medium: Stainless Steel and Steel

dimensions: 19' x 84" x 48"

year completed: 2017

description: SkyLINK is a stainless steel sculpture featuring three links stacked one atop another to form a pathway to the skies above Greensboro. The winged *SpaceBIRD* sculptures work together to create this foundation to the sky. A fourth link is partially revealed near the installation to represent the emerging materials for learning and to recognize donors to this installation. The cooperation, imagination, and ingenuity shown in this scene are meant to spark these feelings in viewers.



Infinite Welcome at the Greensboro Children's Museum, Greensboro, North Carolina

medium: Stainless Steel and Steel

dimensions: 38' x 18' x 5'

year completed: 2017

description: About 100 yards from this sculpture is a second installation, *Infinite Welcome*, which reinforces and expands the messages presented in *SkyLINK*. The museum leadership asked Brad Oldham and Christy Coltrin to reimagine an existing steel structure of unknown origin. They painted the steel blue and moved the 38-foot-tall piece to greet visitors from the street and parking lot as well as attract interest from the park across the street. A series of hand-formed and polished stainless steel dots and dashes lead up the leg of the piece to a *SpaceBIRD* viewing the work in progress on *SkyLINK* near the main entrance. The message "Everyone is Welcome" appears in Morse code on *Infinite Welcome*.



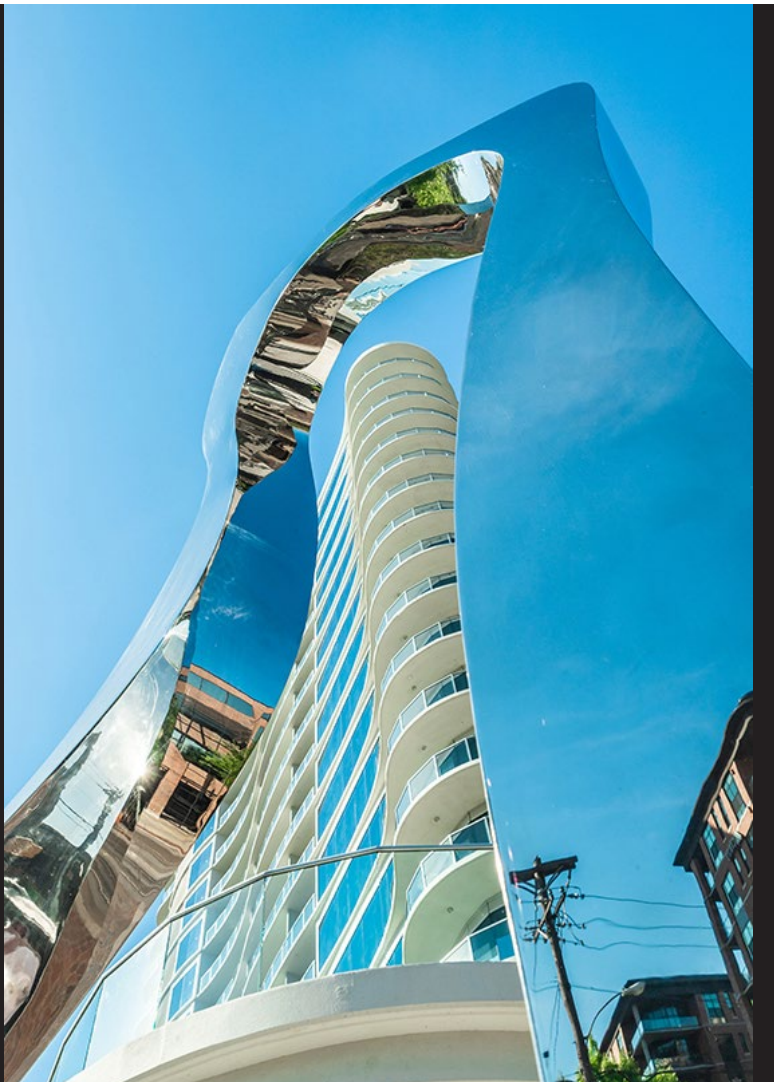
Uptown Moment, Dallas, Texas

medium: Stainless Steel and Steel

dimensions: 17' x 6' x 3'

year completed: 2017

description: A 17-foot-tall stainless steel sculpture called *Uptown Moment* was created for the busy corner of McKinney Avenue and Routh Streets in Dallas' Uptown neighborhood. Brad Oldham and Christy Coltrin created this site-specific installation to celebrate the newly built mixed-use project built on a storied historic location. The artists considered the building's iconic footprint and turned it on its side to create a framework in which life's special moments may be captured. Viewers walk around the sculpture to experience the different perspectives, find themselves inside the frame, and see their image within the mirror-polished stainless steel sculpture itself.



Combination, Midlothian, Texas

medium: Steel, Concrete and Bronze

dimensions: 31' x 60' x 60'

year completed: 2016

description: The 31-foot-tall sculpture is the first public art installation in the city of Midlothian, and it has two purposes. First, it creates a focal point – a visual landmark piece – around which residents and visitors can gather. And second, it represents the collaborative strength of the community. Adding to the story is Joe, a bronze sculpture of a man positioned at the base, shown tightening the last bolt. While the twisted beams are the business-community collaboration using locally sourced materials, Joe is the human element, and the driving force behind success.



Better to Give, Richardson, Texas

medium: Stainless Steel and Bronze

dimensions: 9' x 3.5' x 5.5' (for largest dog only)

year completed: 2015

description: A wise dog was training a playful puppy when they came upon another dog digging a hole for her bone. The puppy wanted to hide the bone from the dog with her head down digging. Brad Oldham and Christy Coltrin froze the story at this decision-making point as if to engage the viewers on what to do next. The artists' hope is that the puppy learns that it is better to give than pull a prank at another's expense.



Together, Washington, D.C.

medium: Lost-Wax Bronze Sculpture on Hand-Cut Granite Base

dimensions: 36" x 66" x 44"

year completed: 2013

description: Brad Oldham collaborated with National Geographic Explorer-in-Residence and fine-art photographer Beverly Joubert in Botswana to create a life-size lion sculpture in bronze. The sculpture shows a rare moment when a male lion interacts with a cub. This scene was Beverly's photos, and it is installed at National Geographic's headquarters in Washington, D.C.



The Traveling Man-Walking Tall, Dallas, Texas

medium: Steel, Stainless Steel, Concrete, Rock & LED Lights

dimensions: 40' x 26' x 24'

year completed: 2009

description: In a single step, this sculpture links the historic, urban neighborhood with the rail station. *The Traveling Man* is a three-site installation featuring this guitar-shaped headed character with his *BIRD* friends that creates a gateway welcome on the east side of downtown Dallas. This installation was included in the Americans for the Arts "Year in Review" program in 2010 for best public art in North America. It has also been named a best public artwork by several national publications and has appeared on many national TV programs. *The Traveling Man* enjoys representing Dallas on a large stage.



The Traveling Man-Walking Tall, Dallas, Texas

medium: Steel, Stainless Steel, Concrete, Rock & LED Lights

dimensions: 40' x 26' x 24'

year completed: 2009

description: This tight shot of *The Traveling Man-Walking Tall* shows his dancing eyes and a clever smile about his face as he towers over the station with an outstretched hand of friendship. His *BIRD* friends carry his kind and welcoming messages to those who pass by.



The Traveling Man-Waiting on a Train, Dallas, Texas

medium: Steel, Stainless Steel, Concrete, Rock & LED Lights

dimensions: 9' x 9' x 18'

year completed: 2009

description: *The Traveling Man-Waiting on a Train* strums his guitar as his BIRD friends look on. The sculpture is located across the tracks and down the block from the other two sculptures in this commission. This location is a popular picture location for wedding parties, holidays, and other special occasions.



The Traveling Man-Awakening, Dallas, Texas

medium: Steel, Stainless Steel, Concrete, Rock & LED Lights

dimensions: 4.5' x 8' x 2.5'

year completed: 2009

description: Located in the heart of Deep Ellum, *The Traveling Man-Awakening* rises from the Earth. As people gather, they can lounge on his 8-foot-wide head. His *BIRD* friends offer seating too, as their scooped back is a comfy perch. People enjoy lingering here, often taking pictures.



The Birth of a City, Dallas, Texas

medium: Bronze

dimensions: ten bas-relief panels on Park Avenue 6' x .5' x 45' and six bas-relief panels on Young Street 5' x .5' x 15'

year completed: 2014

description: The installation features iconic and lesser-known Dallas histories in each 6' x 4' sculpted panel, where the artists have expanded upon a Dallas-based narrative told in a lost mural from the 1930s, when the block was originally built. This was a time when Dallas was transformed from a hardscrabble, parochial town to a cosmopolitan, international city. The overall narrative from the mid 1850 through the late 1930s tells of work, determination and coming together that strike a chord today in downtown Dallas.



The Birth of a City, Dallas, Texas

medium: Bronze

dimensions: ten bas-relief panels on Park Avenue 6' x .5' x 45' and six bas-relief panels on Young Street 5' x .5' x 15'

year completed: 2014

description: The faces seen in the 60-linear-foot sculpture are a blend of famous and nameless people who worked each brought something special to this city's story. Over the course of her forty years in Dallas, the self-made business woman in the chair singularly owned more than one-fourth of the land in Dallas and was one of Texas' first millionaires. Robert Johnson recorded his last album on the block where this installation is today. There are hundreds of stories in this installation.



Whimsy & Wise, Palo Alto, California

medium: Stainless Steel

dimensions: six owl sculptures that are each 44" tall

year completed: 2014

description: The city of Palo Alto commissioned a series of owl sculptures for the entrance to the newly renovated Mitchell Park Library to protect the entrance. They knew that these 44-inch-tall sculptures would add interest and engagement to the building entrance. What they did not expect was the added benefit of stopping children leaving the library. Parents have let the library staff know that when their kids run out the front door, they often (safely) stop before they get to the street to visit with *Whimsy & Wise*.



SkaterBIRD, Dallas, Texas

medium: Stainless Steel

dimensions: 22' x 6' x 10'

year completed: 2015

description: The 22-foot-tall *SkaterBIRD* has taken up residence in the Dallas skyline atop of the building where the Brad Oldham Sculpture studio is located. This sculpture represents the leap of faith that artists and entrepreneurs take every day. This fearless-minded sculpture welcomes viewers to take their own jump to the unknown ahead, with style and attitude. Notice how the skyline of downtown Dallas reflects in *SkaterBIRD*'s body – this sculpture has beautiful daytime and nighttime experiences.



The Great One, Brantford, Ontario

medium: Bronze

dimensions: 14' x 6' x 3'

year completed: 2013

description: Brad Oldham worked with Wayne Gretzky and his family to create the 4-piece sculpture at the Gretzky Sports Centre in Brantford, Ontario. Young Wayne holds his parents hands, looks up to the champion skater, thinking that he wants to be him someday. Adult Wayne looks down, thinking, "We did it!"



Lumen Light Team, Dallas, Texas

medium: Mirror-Polished Stainless Steel

dimensions: 78" x 73" x 24" (example of one sculpture size) Bancroft

year completed: 2013

description: This 28-piece, indoor/outdoor installation is throughout the hotel property in varying sizes. Playfully sophisticated, the artwork is based on a story created for the series using light and the boutique hotel's unique qualities to make this a true site-specific installation. Two sculptures – Violet and Bancroft - are shown here.



Ingrid and Ray – and BIRD with Cactus, Dallas, Texas

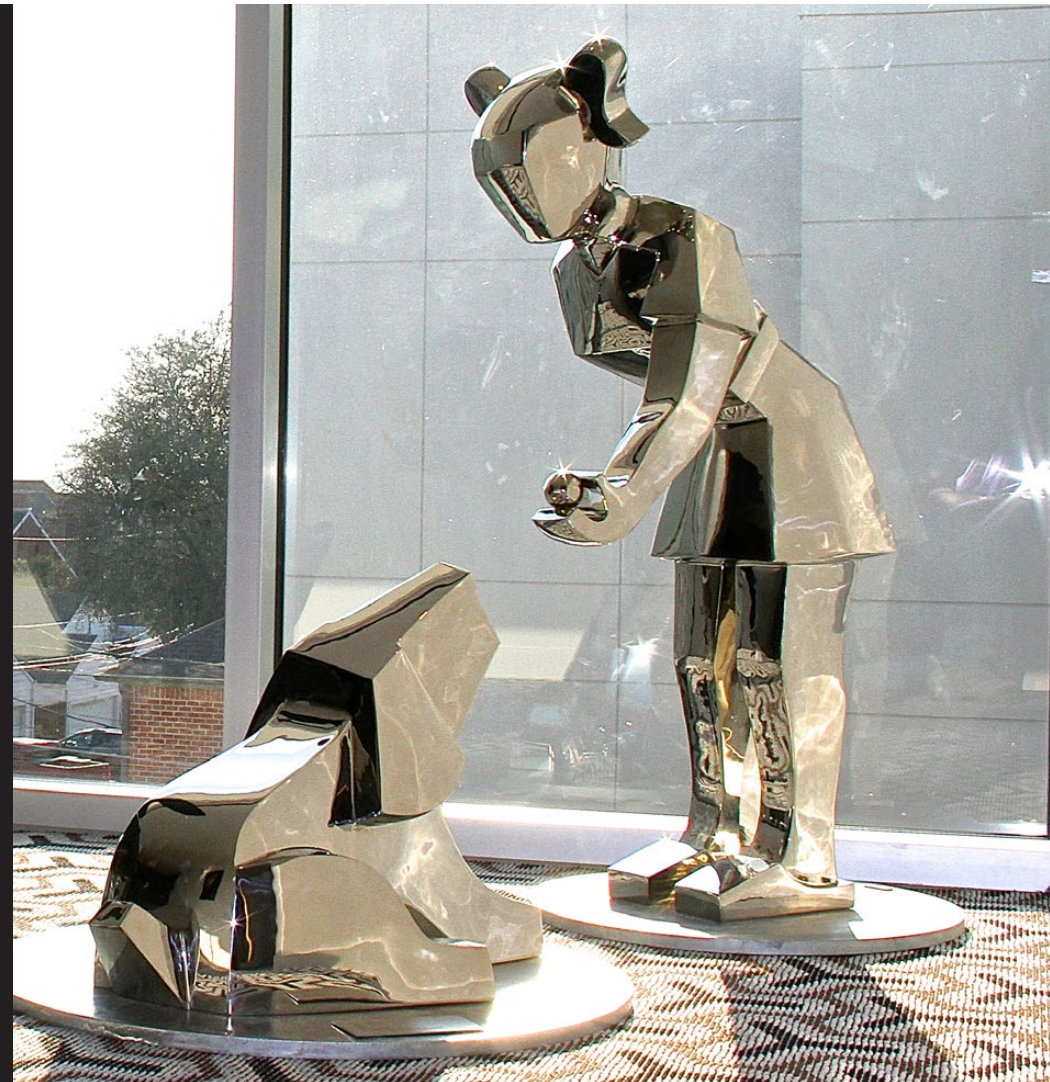
medium: Mirror-Polished Stainless Steel

dimensions: Ingrid 48" x 14.5" x 27.5"; Ray 20.5" x 21" x 28"

year completed: 2013

description: *Ingrid*, the animal lover, fits a niche within the *Lumen Light Team*. She is shown with *Ray*, the dog sculpture in the collection. The hotel is pet friendly, and *Ray* is the known as the mascot of the property.

The *BIRD with Cactus* greets guests upon arrival in the entry courtyard between the two sides of the hotel. Both neighborhood residents and hotel employees claim ownership of the collection of sculpture throughout the property.



Griffin, Houston, Texas

medium: Antiqued Bronze

dimensions: 14' x 9' x 9'

year completed: 2014

description: The 14-foot-tall *Griffin* sculpture stands proud in the lobby of the downtown Houston JW Marriott. His wings extend through the glass to fly above the sidewalk to engage street traffic and welcome them inside the historic hotel. Brad Oldham enjoyed reimagining the icon in the international company logo in this scale and in this location.



Chicago Works at the Fairmont Hotel, Chicago, Illinois

medium: Aluminum and Bronze

dimensions: 20' x 14' x 8'

year completed: 2016

description: A commission can start for many reasons, and this one began when the Fairmont Hotel responded to neighborhood complaints of nighttime light bleed from the hotel's exterior LED sign. The artists considered neighborhood feedback and the historical significance of the location when creating two scenes depicting Chicago's bridges and skyscrapers.

Bronze material worked best for the hotel design, but the oval bronze pipe structure could not support the weight of bronze artwork. Instead, the artists cast the bas-relief panels in aluminum and hand-applied a custom bronze finish. The day of installation, several residents attended and were engaged enough to get the local media to cover *Chicago Works*.



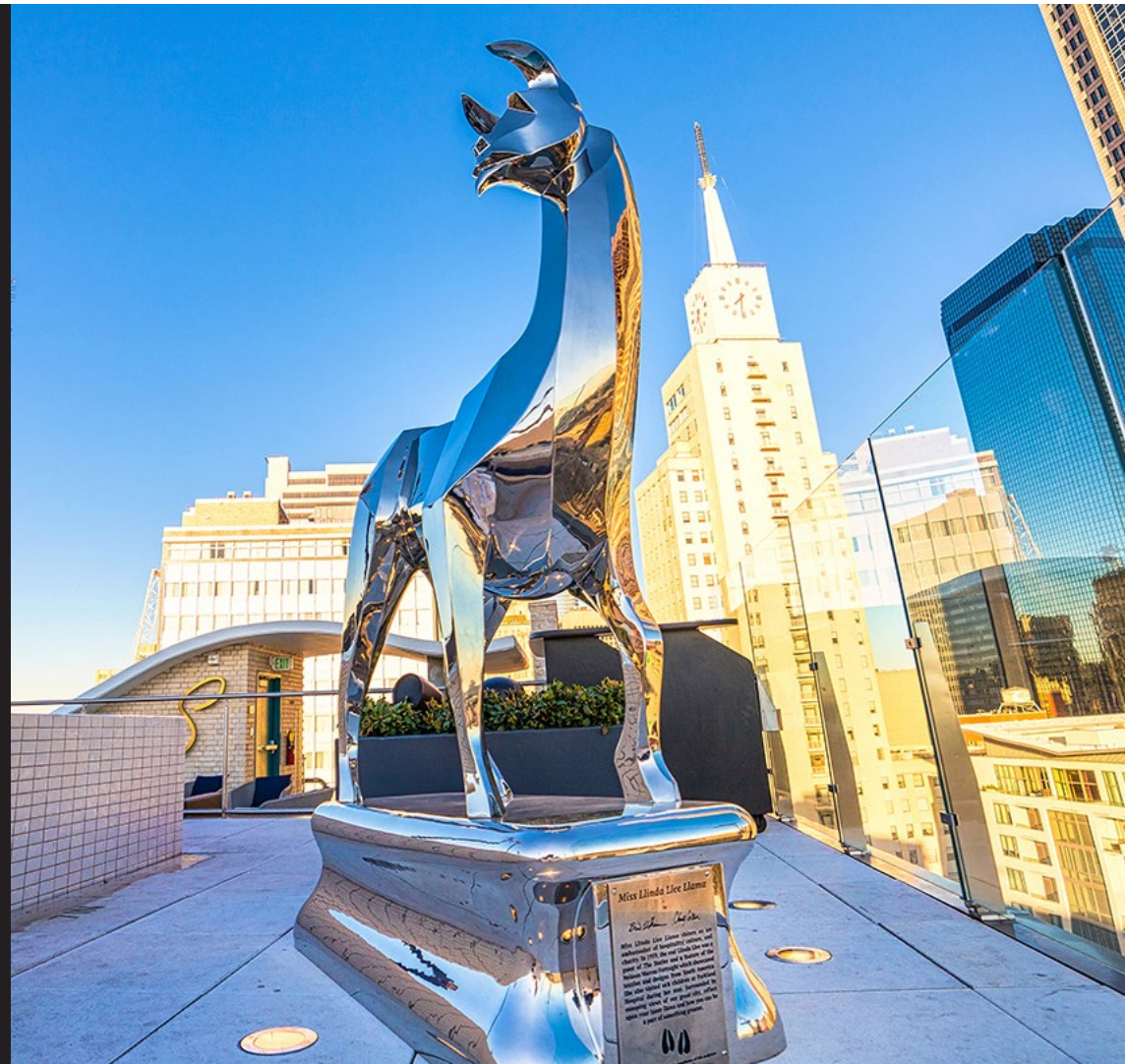
Miss Llinda Llee Llama at the Statler Hotel, Dallas, Texas

medium: Stainless Steel

dimensions: 8.5' x 6' x 3'

year completed: 2017

description: Many elegant and storied guests have stayed at The Statler Hotel over the years. One such guest was Miss Llinda Llee Llama. In 1959, Neiman Marcus invited her to Dallas to be part of its Fortnight program featuring materials and fashions inspired by South American. The artists remember this special guest in our mirror-polished stainless steel sculpture. The historical hotel celebrated the completion of its extensive renovations with this rooftop commission. The sculpture has earned its own social media following and inspired an advice column by the sassy, fashionable personality.



Sweet Carrot at Clearfork , Fort Worth, Texas

medium: Bronze

dimensions: 34" x 11' x 28"

year completed: 2017

description: When Brad Oldham and Christy Coltrin created *The Wild Crops Collection*, they combined iconic fruit and vegetable shapes with animal characteristics to produce tabletop personalities. *Sweet Carrot* is the first of the collection to be realized as public art. Firmly rooted underground, the bright carrot spends most of its life in hiding, its sweetness only discovered by those who dare to dig deep. The humble sparrow might also escape everyday notice. These examples of raw beauty hold the power to nourish and inspire when examined. Each sculpture in the collection comes with a toast to share. For *Sweet Carrot*, it is: "May your words be as light as a feather, and as sweet as a carrot, for tomorrow you may eat them."



Conrad Trees, Chicago, Illinois

medium: Brass

dimensions: 13' x 18' x 44"

year completed: 2016

description: Every tree has a story and these hand-formed brass pieces were born of collaboration between the artists and client to create a gateway welcome into the hotel at the street level. Guests walk through the sculptural trees to the elevator to reach the lobby on the 20th floor. The mid-century modern feel echoes Chicago's unique skyline of skyscrapers in this style. With Chicago architects like Ludwig Mies van der Rohe, it is easy to associate mid-century modern with downtown Chicago. *The Conrad Trees* installation garners attention from guests and passerby alike.



Decisions & Determination, Oklahoma City, Oklahoma

medium: Bronze

dimensions: 96" x 60" x 24"

year completed: 2017

description: The path to becoming a vibrant city was not a straight line for Oklahoma City, which faced unexpected challenges and opportunities that required confidence in making difficult decisions and the ability to persevere when the "going got tough." Brad Oldham depicts this organic path using twisted rails in this sculpture called *Decisions*. Oldham molded and referenced a salvaged section of rail from the MKT Railroad. This bronze sculpture works in tandem with the companion sculpture, *Determination*, which is comprised of bronze dancing bricks. Together, the pair of sculptures celebrates the heartfelt work invested into making this city work.

Pioneers built Oklahoma City brick by brick with dogged determination, to make a home of this rugged land. Oldham researched and purchased historic bricks made in Oklahoma as inspiration and models for the bronze bricks in this installation. He sought to elevate the craft of brickwork into a fine art to honor the sheer grit of the city's forefathers. *Determination* is the companion sculpture to *Decision*, a lost-wax bronze sculpture of twisted rail. It took both confidence and unflinching determination to create the city where these sculptures stand today.



Portal, Dallas, Texas

medium: Stainless Steel, Aluminum and Bronze

dimensions: 8' x 6' x 3.5'

year completed: 2018

description: Historically known as a gate, and more commonly referred to today as an Internet site, Brad Oldham and Christy Coltrin saw a portal as a dynamic point of transition and ideal imagery for a donor-recognition sculpture for Southern Methodist University. Viewers see a grouping of sculpted bronze books coming off the mirror-polished stainless-steel wall behind; these books are positioned to allow for a 36" diameter portal in the middle. This portal will draw the viewer in to look closer, at which point they may see themselves in the polished stainless-steel portal. Reflection is a key point of engagement in setting the mood for the viewing experience and reflecting on the transformative impact the school has on the lives of its students.



Nest Sculpture, Chicago, Illinois

medium: Bronze and Glass

dimensions: 12' x 109' x 1.5'

year completed: 2008

description: The jumping-off point for this sculpture was Brad Oldham's intrigue with the elegance of a small screen made by Henry Bertoia using brass and steel rods. Oldham explored and expanded the idea to create an open forest-like feel inside the Fairmont Hotel lobby. The installation functions to create a visual separation between the lobby and bar, and more. The cozy circular 109-foot blended line of trees has become a visual signature for the well-known hotel. It is called the *Nest Sculpture* because Oldham chose to up light the sculpture, thereby creating a nest pattern on the lobby ceiling.



Princess Pig, Dallas, Texas

medium: Stainless Steel

dimensions: 38" x 66" x 26"

year completed: 2018

description: Imagined in an easy conversation between the artists and long-time client, *Princess Pig* was born to be an illustrious citizen of Dallas. She is a bold example of styled independence and her charming smile invites love and affection. *Princess Pig* revels in the royal treatment, which to her means a good nose or belly rub. The quote that accompanies this sculpture is, "She never really took to the farm," by Marty Collins.



Windy City, Chicago, Illinois

medium: Cast Resin with Composite Bronze Finish

dimensions: 86" x 52" x 24"

year completed: 2008

description: Nicknames stick when some power exists behind the idea, and it gains wide traction. Some may think that Chicago is known as the *Windy City* because the chilly gusts coming off Lake Michigan; the wind impacts all residents and visitors, unifying them in the same experience. There is also a theory that the name infers that Chicago politicians are full of hot air. Either way, Chicago has some powerful winds that Brad Oldham used to represent the vibrant energy and constant motion present on every street corner. Installed in an alcove in the lobby of the Hyatt Centric Chicago Magnificent Mile, *Windy City* shows residents holding onto a bus stop sign as the wind lifts their bodies and feet off the ground.



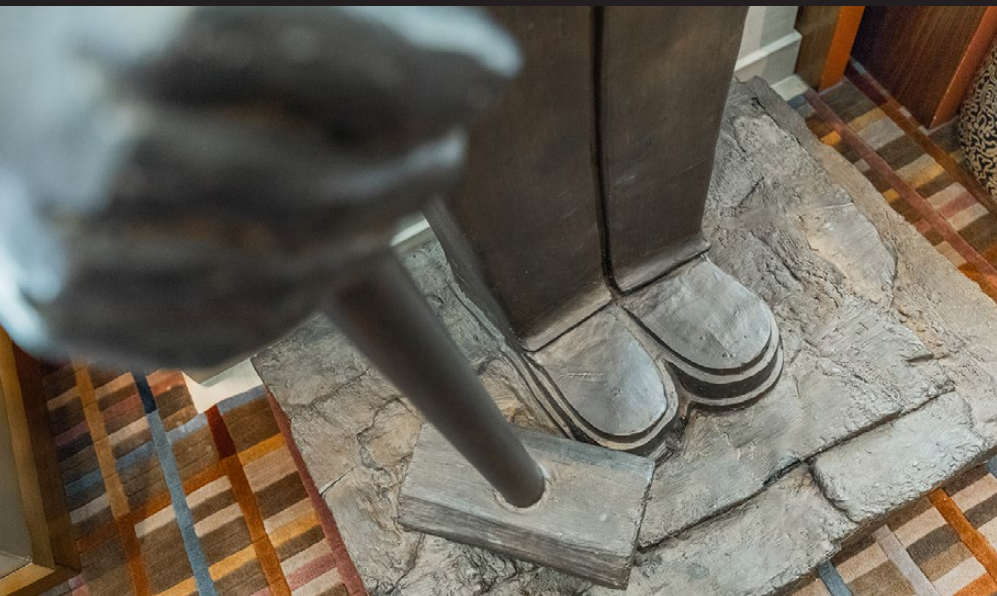
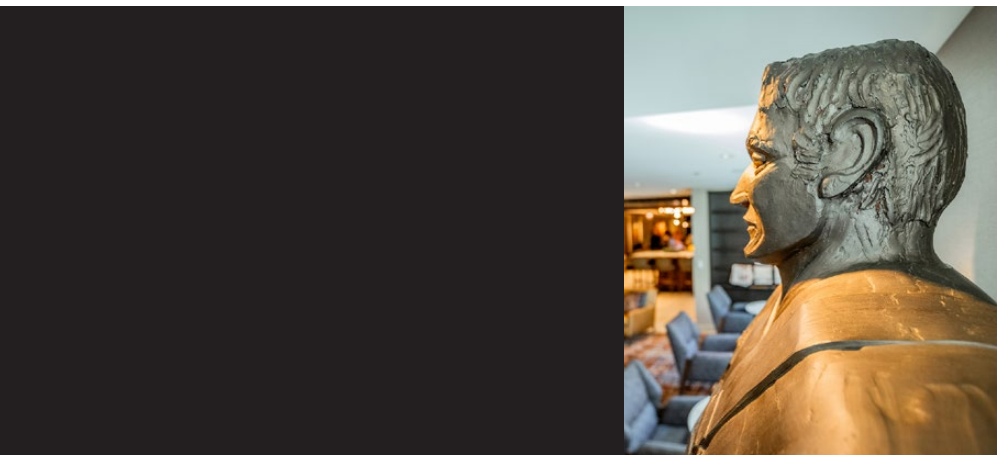
Big Shoulders, Chicago, Illinois

medium: Cast Resin with Composite Bronze Finish

dimensions: 80" x 42" x 30"

year completed: 2008

description: The Hyatt Centric Chicago Magnificent Mile *Big Shoulders* is a sculpture by Brad Oldham of a hardworking Chicagoan man to exemplify those on whose shoulders the great city of Chicago was built upon. After the Great Chicago Fire of 1871, the collective communities came together to rebuild this city in steel and stone, setting a new precedent for worldwide construction. The economic booms of the early 20th century and the bust of the Great Depression further shaped the city and its people into the unique city it is today. The accentuated strong arms and back of *Big Shoulders* pays homage to the many strong workers in Chicago who continue to build the great city of Chicago. The character seen in *Big Shoulders* is a gritty, physically imposing man who doesn't let anything stop his progress.



Map Wall, Chicago, Illinois

medium: Aluminum, Wood, Resin, and Antique Pewter Finish

dimensions: 9' x 20' x 3"

year completed: 2008

description: The Hyatt Centric Chicago Magnificent Mile *Map Wall* sculpture by Brad Oldham was interpreted from an antique Rand McNally & Co.'s New Street Number Guide Map of Chicago from 1910. Oldham used a combination of raised and lowered sections to create a look and feel of the city and its landscape. As the roads dictate the shape of this artwork, it's interesting to consider the social and utilitarian aspects of such streets. The sculpture is made of mixed media, fiberglass, wood, aluminum, resin and seven layers of paints to achieve the final finish. The intention of the cut outs was to enhance the beauty of the deep blue glass behind the sculpture. The *Map Wall* sculpture required a creative use of materials and hundreds of hours of handwork to complete.



Creative Process

How We Work:



To develop site-specific, placemaking sculpture for a community and location, we typically follow this work path:

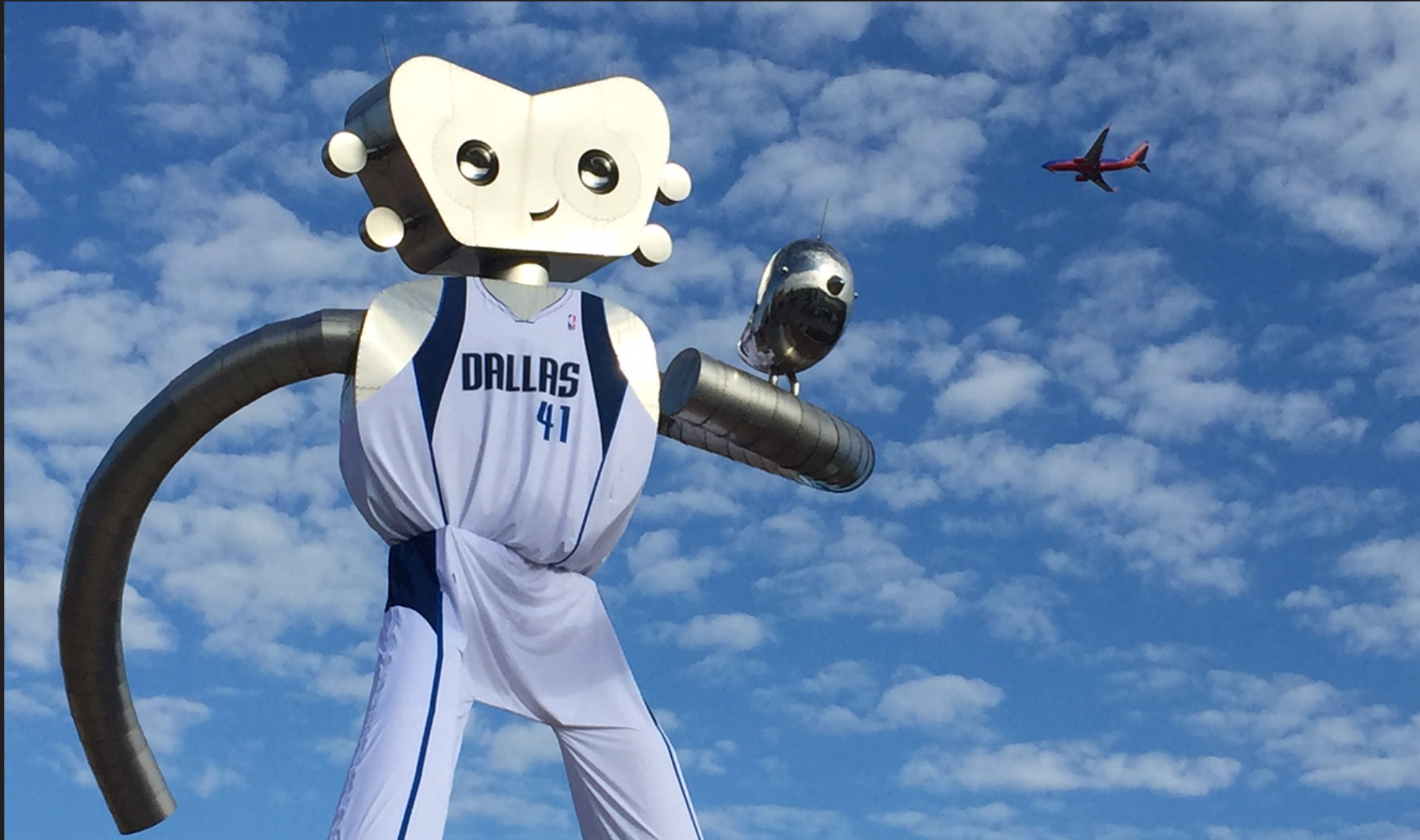
- Gather information via research, site visits, client interviews
- Pencil sketch
- Write initial draft of story/overview
- Identify material and scale required for location, within project budget
- Analyze site lines
- Clay maquette or digital renderings
- Develop a second concept to test our initial concept
- Line-item budget
- Critical-path timeline
- Client input/presentation
- Design concept selected by client
- Engineering, shop drawings
- Finalize design concept & location details
- Fabrication
- Artists' plaque design & fabrication
- Installation

Project management, client communication, budget management, and fabrication progress reporting run throughout the project.

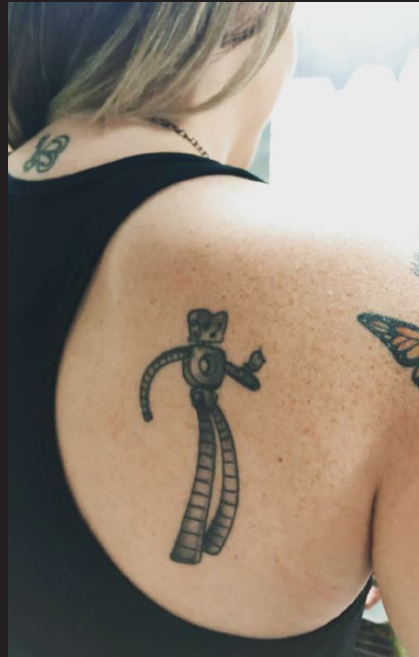


Organic Social Engagement

The Traveling Man



Organic Social Engagement
The Traveling Man



Organic Social Engagement

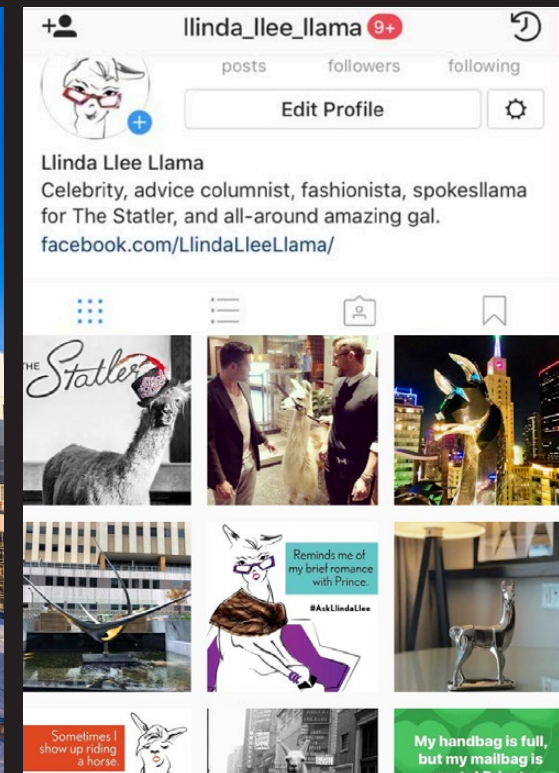
SkaterBIRD



Brad Oldham Sculpture

Organic Social Engagement

Miss Llinda Llee Llama



Brad Oldham Sculpture

Organic Social Engagement
Running with the Moon



Social Media & Contact Information:



bradoldham.com
1200 Ross Avenue, No. 180
Dallas, Texas 75202
214-740-0600



BradOldhamSculpture
TinySparksNation



@BradOldhamSculpture
@TinySparksNation



@Brad_Oldham
@ChristyColtrin



Brad Oldham Sculpture



Brad Oldham Sculpture