

*WILD CROPS*  
a Series of Rarities

BY BRAD OLDHAM SCULPTURE

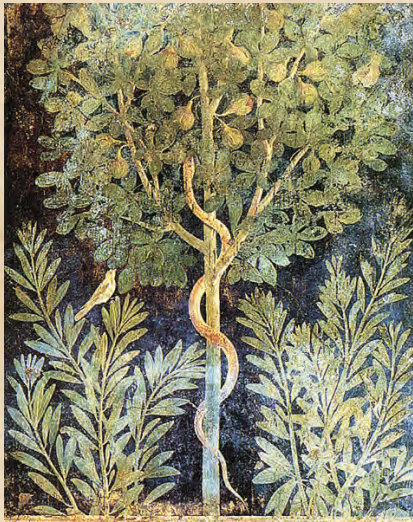


## HOW IT ALL BEGAN



A SPIRITED CONVERSATION OVER A SUNDAY MORNING PANCAKE BREAKFAST SPARKED SOME ROWDY IDEAS THAT ULTIMATELY FOUND THEIR HOME IN THE *Wild Crops Collection*. ICONIC FRUIT AND VEGETABLE IMAGERY HAS BEEN FEATURED IN ART THE WORLD OVER. PICTURES OF CROPS AND ANIMALS WERE EMBLAZONED ON THE WALLS OF HOMES IN FIRST CENTURY B.C., AND LATER MEMORIALIZED FOR AWE-INSPIRED FUTURE GENERATIONS IN THE REMNANTS OF POMPEII, WHERE STILL-LIFE PORTRAYALS OF FIGS, GRAPES AND PEARS, TO NAME A FEW, STILL EXIST. FROM THE WORKS OF PRESENT-DAY ASPIRING PAINTERS TO THOSE OF REPUTED MASTERS, THE TWO-DIMENSIONAL APPROACH OF REPRESENTING FRUITS AND VEGETABLES IN ART IS PART OF AN ESTABLISHED MAINSTAY OF USING EVERYDAY OBJECTS TO EVOKE MEMORIES AND RECOLLECTIONS. WE RELATE TO FOOD AND ANIMALS AT A BASE LEVEL, AND AT THE HIGHEST INTELLECTUAL PLANE. IT'S A SIMPLE, YET COMPLICATED RELATIONSHIP, RIPE FOR EXPLORATION FROM THE VIEWER OR COLLECTOR, AND WITH THE *Wild Crops Collection*, THIS CONCEPT HAS TAKEN A STIMULATING NEW DIRECTION.





FROM THE TOP, LEFT TO RIGHT:

Bison. ALTAMIRA CAVE, SPAIN. PALEOLITHIC ERA. *Charcoal and ochre on the wall's surface.*

Serpent in Fig Tree. CASA DEL FRUTTETO, POMPEII, ITALY. 20-10 B.C. *Roman fresco, third style.*

Still Life with Apples and Biscuits (cropped detail), 1895, BY PAUL CEZANNE. *Oil on canvas.*

Elephant Trampling a Snake. SILVER DENARIUS OF JULIUS CAESAR, 49 - 44 B.C. *Ancient coin.*

Summer, 1563, BY GIUSEPPE ARCIMBOLDO. *Oil on lindenwood.*





THE *Wild Crops Collection*, CREATED BY NATIONALLY RECOGNIZED ARTIST BRAD OLDHAM AND HIS WIFE, CHRISTY COLTRIN, STEPS BEYOND THE TRADITIONAL APPROACH TO THIS EVER-PRESENT SUBJECT, CREATING A THREE-DIMENSIONAL CONCEPT. THE SERIES JOINS THE STAPLES OF LIFE WITH MEMBERS OF THE ANIMAL KINGDOM, COMBINING ORGANIC SHAPES OF FLORA WITH THE UNEXPECTED FEATURES AND TEXTURES OF FAUNA. THE RESULTING SERIES COMPRISES SEVEN MOVING CREATIONS THAT REFLECT AN AMALGAMATION OF TWO WORLDS INTO ONE, GIVING THE OBSERVER A SENSE OF ADVENTURE AND SELF-REFLECTION EACH TIME THEY ARE ENJOYED. EACH SCULPTURE HAS BEEN PAINSTAKINGLY MOLDED INTO A LUXURIOUS ARTWORK, BESTOWING UPON THE OBSERVER AN INDIVIDUAL EXPERIENCE, AS WELL AS A CONVERSATION PIECE. IT IS UP TO THOSE ON HAND TO DECIDE WHICH IS ENHANCING THE OTHER.



EACH EDITION IN THE *Wild Crops Collection* IS DESIGNED TO CAPTIVATE ALL THE SENSES, AS THE MELDING OF FOOD AND ANIMAL BRINGS SIGHT, SOUND, TASTE, TOUCH, AND SMELL TO THE FOREFRONT OF THE MIND. DISPLAYED ON COFFEE TABLES, SIDE TABLES, IN ART NICHES, OR ANYWHERE THAT INSPIRES YOU TO LOOK BEYOND THE ORDINARY, THESE PIECES WILL BEG TO BE TOUCHED. THE INCORPORATION OF ONE SUBJECT INTO ANOTHER REQUIRES DEEP EXPLORATION, TO DISCOVER INTRICACIES THAT EMERGE WHEN TWO INCOMPATIBLE FACTIONS ARE COMBINED — AND DOING SO IN A SINGLE MOMENT IS NOT RECOMMENDED.





THE SCULPTURES HAVE ALSO INSPIRED ORIGINAL TOASTS, TO BE SHARED WITH FRIENDS AND FAMILY. THE FAMOUS QUOTATIONS AND STORIES BEHIND EACH ARTWORK FURTHER EXTEND THE ENGAGEMENT WITH AND ENJOYMENT OF THIS SERIES. EACH INDIVIDUAL SCULPTURE NOT ONLY REFLECTS THE CREATIVITY OF THE ARTIST; IT IS ALSO REFLECTIVE OF ITS OWNER, AS THE PERSONALITIES OF THESE AMAZING CREATURES COME TO LIFE.

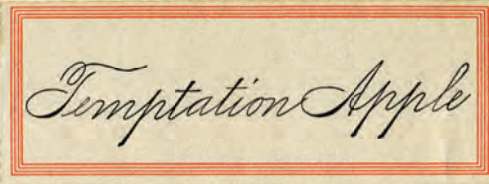
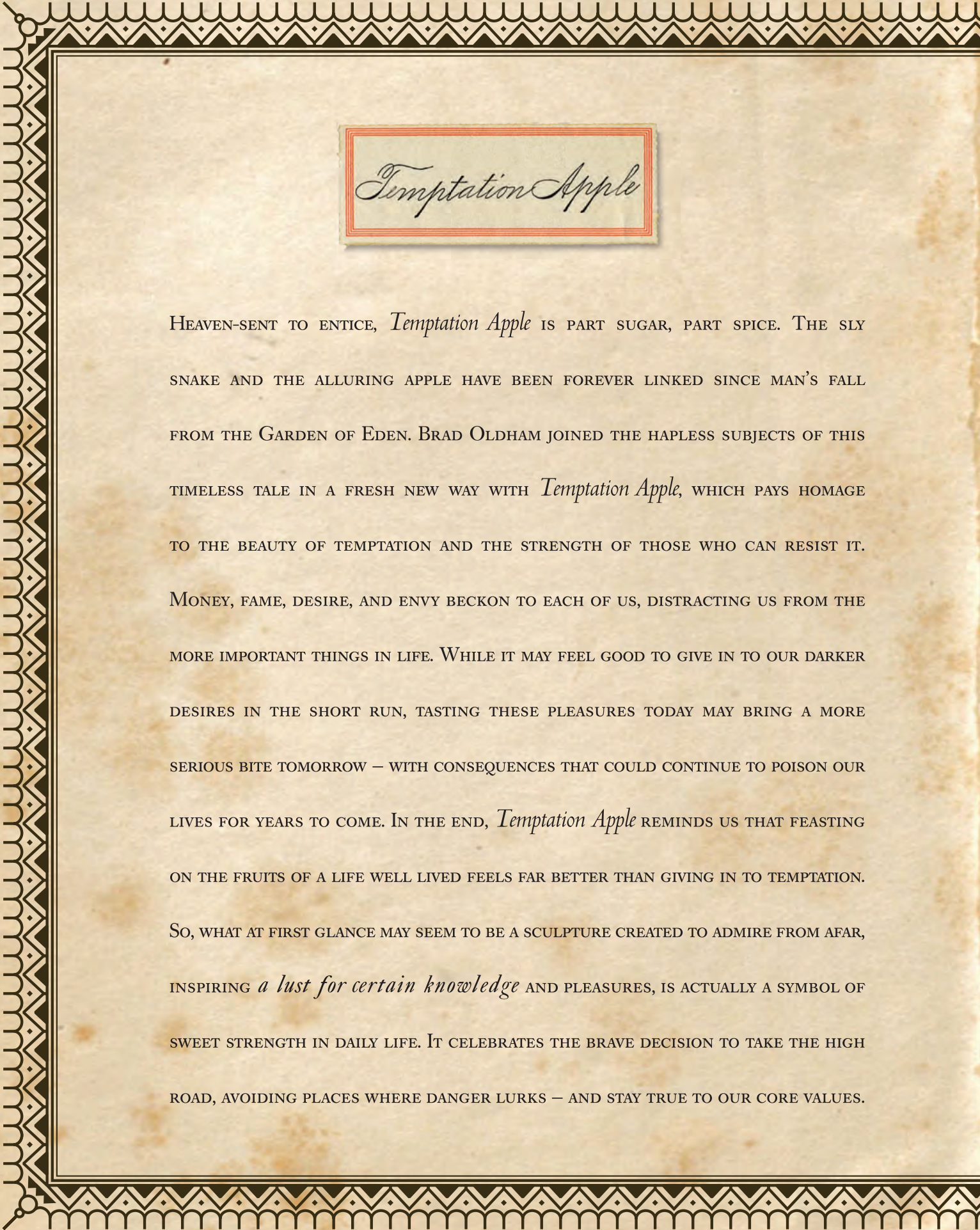


THE *Wild Crops Collection* IS AN EXCEPTIONAL OPPORTUNITY FOR COLLECTORS AND OTHERS WHO APPRECIATE FINE ART AND RARE CONCEPTS TO ENHANCE THEIR PERSONAL COLLECTIONS, OR SERVE AS GIFTS OF CONSEQUENCE. EACH PIECE IS ARTIST SIGNED AND INDIVIDUALLY NUMBERED, WITH A CERTIFICATE OF AUTHENTICITY.



*Temptation Apple, Pearaphant, Strutting Artichoke, Turtleroom, Rhinobeet, Sweet Carrot, and Crockapea* — SEVEN INCOMPARABLE DESIGNS, CONCEPTS, AND SCULPTURES CREATED TO BE ENJOYED UNIQUELY. *Here's to exploring the extraordinary in art and life – may your journey be as wild as you choose.*





## *Temptation Apple*

HEAVEN-SENT TO ENTICE, *Temptation Apple* IS PART SUGAR, PART SPICE. THE SLY SNAKE AND THE ALLURING APPLE HAVE BEEN FOREVER LINKED SINCE MAN'S FALL FROM THE GARDEN OF EDEN. BRAD OLDHAM JOINED THE HAPLESS SUBJECTS OF THIS TIMELESS TALE IN A FRESH NEW WAY WITH *Temptation Apple*, WHICH PAYS HOMAGE TO THE BEAUTY OF TEMPTATION AND THE STRENGTH OF THOSE WHO CAN RESIST IT. MONEY, FAME, DESIRE, AND ENVY BECKON TO EACH OF US, DISTRACTING US FROM THE MORE IMPORTANT THINGS IN LIFE. WHILE IT MAY FEEL GOOD TO GIVE IN TO OUR DARKER DESIRES IN THE SHORT RUN, TASTING THESE PLEASURES TODAY MAY BRING A MORE SERIOUS BITE TOMORROW — WITH CONSEQUENCES THAT COULD CONTINUE TO POISON OUR LIVES FOR YEARS TO COME. IN THE END, *Temptation Apple* REMINDS US THAT FEASTING ON THE FRUITS OF A LIFE WELL LIVED FEELS FAR BETTER THAN GIVING IN TO TEMPTATION. SO, WHAT AT FIRST GLANCE MAY SEEM TO BE A SCULPTURE CREATED TO ADMIRE FROM AFAR, INSPIRING *a lust for certain knowledge* AND PLEASURES, IS ACTUALLY A SYMBOL OF SWEET STRENGTH IN DAILY LIFE. IT CELEBRATES THE BRAVE DECISION TO TAKE THE HIGH ROAD, AVOIDING PLACES WHERE DANGER LURKS — AND STAY TRUE TO OUR CORE VALUES.







*Temptation Apple* SPECIFICATIONS

HEIGHT	10.00 IN	WIDTH	5.75 IN
DEPTH	6.00 IN	<i>weight</i>	9.50 LBS





HERE'S TO  
TEMPTATION...

YOU *never* KNOW  
WHEN YOU WILL *never*  
SEE IT AGAIN.

MAY YOU ALWAYS BE

*As Sweet*  
AS YOU ARE TODAY,  
BUT NOT

*As Innocent*  
AS YOU LOOK.

“I can

resist

anything

but

*temptation.”*

OSCAR WILDE





WHILE THE REST OF THE WORLD RUSHES BY, UNAWARE OF THE SMALL PLEASURES AND DELIGHTS THE BLURRED KINGDOM HAS TO OFFER, SPEEDILY FLYING ON THEIR PATHS TO NOWHERE, *Turtleroom* IS A REMINDER OF THE JOY THAT IS FOUND WHEN WE SLOW DOWN LONG ENOUGH TO NOTICE IT. COMBINING THE MUSHROOM SHAPE WITH THE TURTLE SHELL TEXTURE, *Turtleroom* ATTRACTS IMMEDIATE ATTENTION — FORCING ANYONE WHO SEES IT TO PAUSE AND LOOK MORE CLOSELY. THE TURTLE'S PACE ALLOWS HIM TO TAKE IN THE WORLD AROUND HIM, LOOKING LONG AND HARD AT HIS SURROUNDINGS, AND LISTENING TO *gain a deeper understanding* OF HIS ENVIRONMENT. SAFE WITHIN HIS PROTECTIVE SHELL, HE IS FREE TO EXPLORE AT HIS LEISURE AND WITNESS HOW THE MUSHROOM GROWS QUICKLY. *Turtleroom* SYMBOLIZES THE ART OF SLOWING DOWN, LOOKING AND LISTENING, AND THE DEEP CONTENTEDNESS OF BEING HEARD. IT ALSO REPRESENTS THE SAFE HARBOR OF HOME, WHICH GIVES US THE FREEDOM TO BRANCH OUT AND CONNECT WITH OTHERS. TURTLES CAN LIVE MORE THAN A HUNDRED YEARS. MUSHROOMS LIVE ONLY A FEW DAYS, BUT REPRODUCE VERY QUICKLY. WHAT HAVE THESE ANCIENT CREATURES SEEN AND HEARD OVER THE MILLENNIA? WHAT WOULD YOU SEE AND HEAR IF YOU LISTENED MORE CLOSELY? *Turtleroom* MAY SERVE AS AN EVER-PRESENT REMINDER OF THE COMFORT AND JOY YOU GIVE WHEN YOU GRANT FRIENDS AND FAMILY THE SERENITY OF A RETURN TO YOUR WARM AND INVITING HOME.







*Turtleroom* SPECIFICATIONS

HEIGHT	7.25 IN	WIDTH	6.50 IN
DEPTH	7.50 IN	<i>weight</i>	7.25 LBS





EVEN FROM THE

# DARKNESS

BEAUTY SPRINGS  
*Eternal.*

LISTENING IS A  
*magnetic and strange* THING,  
A CREATIVE FORCE.

THE FRIENDS WHO LISTEN  
TO US ARE THE ONES  
*we move toward.*

WHEN WE ARE LISTENED TO,  
IT CREATES US,  
MAKES US *unfold and expand.*

“Behold  
the turtle.

He only makes  
*progress*

when he sticks his  
neck out.”

JAMES BRYANT CONANT





EYES FLOATING JUST ABOVE THE SURFACE, NEARLY UNSEEN, LYING IN WAIT TO POUNCE UPON INTERLOPERS, THE CROCODILE MOTHER FIERCELY PROTECTS HER YOUNG. LIKE PEAS IN A POD, HER FAMILY WILL STICK TOGETHER — EVEN AS THE BABY CROCS GROW INTO ADULTHOOD. *Crockapea* SYMBOLIZES PROTECTION AND PRESERVATION OF THOSE PEOPLE AND THINGS THAT WE CARE ABOUT MOST, FROM OUR OWN FAMILY MEMBERS AND FRIENDS, TO THE WORLD AROUND US. THIS SCULPTURE IS A SALUTE TO THOSE WHO MAINTAIN A TOUGH EXTERIOR IN ORDER TO *protect what is most important* INSIDE. SOMETIMES, WE HAVE TO STAND UP FOR THOSE SWEET PEAS WHO CANNOT PROTECT THEMSELVES. ALTHOUGH THE WORLD MAY PERCEIVE US AS HARSH, THE MOTHERS, FATHERS AND STRONG INDIVIDUALS WHO PROTECT WHAT'S DEAR TO THEM ARE SWEETER ON THE INSIDE THAN ANYONE WOULD GUESS. HERE'S TO THOSE UNSUNG CHAMPIONS WHO STAND STRONG IN ANY SITUATION.



EN PROYECTO  
SIGNOS

- Estaciones Centrales*
- Estaciones meteorológicas actuales de 1ª clase*
- Estaciones meteorológicas actuales de 2ª clase*
- Estaciones meteorológicas actuales de 3ª clase*
- Estaciones antiguas*
- Distrito*

I  
II  
III  
IV





*Crockapea* SPECIFICATIONS

HEIGHT	2.25 IN	WIDTH	15.00 IN
DEPTH	6.00 IN	<i>weight</i>	4.00 LBS





# STRENGTH

COMES FROM

WITHIN

AND *shows*

WITHOUT.

“HAPPY ARE THOSE

*Who dare*

COURAGEOUSLY

TO DEFEND

*what they love.”*

OVID

“If you’re going

to live

by the river,

make friends with

the *crocodile.*”

INDIAN PROVERB





## *Sweet Carrot*

FIRMLY ROOTED UNDERGROUND, THE BRIGHT CARROT SPENDS MOST OF ITS LIFE HIDDEN FROM VIEW, ITS SWEETNESS ONLY DISCOVERED BY THOSE WHO DARE TO DIG DEEP. IN A HIGHER PLANE, THE HUMBLE SPARROW ALSO ESCAPES EVERYDAY NOTICE, VISIBLE ONLY TO THOSE WHO TAKE THE TIME TO LOOK UP HIGH, BEYOND THEIR TYPICAL FIELD OF VISION. ALTHOUGH OFTEN OVERLOOKED, BOTH OF THESE LIVING *examples of raw beauty* HOLD THE POWER TO NOURISH AND INSPIRE. CARROTS DELIVER ESSENTIAL VITAMINS, SHARPEN OUR EYESIGHT, AND SUSTAIN OUR BODIES WITH ENERGY. SPARROWS NOURISH OUR SOULS WITH THEIR BEAUTIFUL SONGS, AND INSPIRE OUR MINDS WITH THE WONDER OF FLIGHT. WITH *Sweet Carrot*, BRAD OLDHAM REMINDS US TO LOOK MORE CLOSELY AT THE WORLD AROUND US, SEARCHING HIGH AND LOW TO FIND THE EVERYDAY TREASURES THAT AWAIT US. AFTER ALL, THE MORE WE APPRECIATE THE GIFTS IN OUR LIVES, THE BETTER WE BECOME.







*Sweet Carrot* SPECIFICATIONS

HEIGHT 3.50 IN WIDTH 19.00 IN

DEPTH 3.00 IN *weight* 5.25 LBS





MAY YOUR WORDS BE AS

*light as a feather*

AND

*sweet as a carrot,*

FOR TOMORROW  
YOU MAY EAT THEM.

REMEMBER

TO *stay rooted*  
IN WHO YOU ARE

WHILE  
YOUR DREAMS  
*take flight.*

“A sparrow

may be slight,


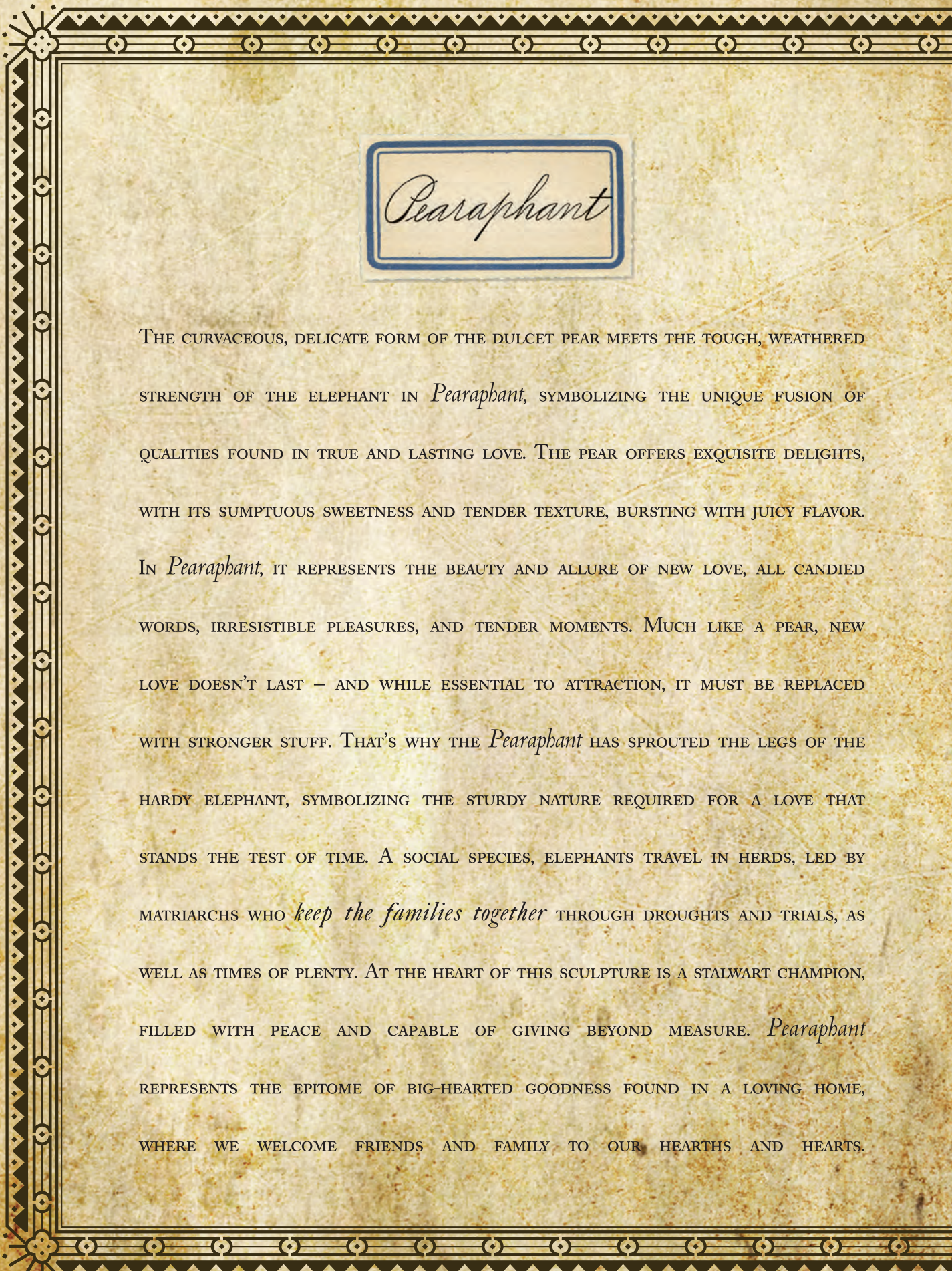
but its song

fills the sky

to *overflowing.*”

UNKNOWN





## Pearaphant

THE CURVACEOUS, DELICATE FORM OF THE DULCET PEAR MEETS THE TOUGH, WEATHERED STRENGTH OF THE ELEPHANT IN *Pearaphant*, SYMBOLIZING THE UNIQUE FUSION OF QUALITIES FOUND IN TRUE AND LASTING LOVE. THE PEAR OFFERS EXQUISITE DELIGHTS, WITH ITS SUMPTUOUS SWEETNESS AND TENDER TEXTURE, BURSTING WITH JUICY FLAVOR. IN *Pearaphant*, IT REPRESENTS THE BEAUTY AND ALLURE OF NEW LOVE, ALL CANDIED WORDS, IRRESISTIBLE PLEASURES, AND TENDER MOMENTS. MUCH LIKE A PEAR, NEW LOVE DOESN'T LAST — AND WHILE ESSENTIAL TO ATTRACTION, IT MUST BE REPLACED WITH STRONGER STUFF. THAT'S WHY THE *Pearaphant* HAS SPROUTED THE LEGS OF THE HARDY ELEPHANT, SYMBOLIZING THE STURDY NATURE REQUIRED FOR A LOVE THAT STANDS THE TEST OF TIME. A SOCIAL SPECIES, ELEPHANTS TRAVEL IN HERDS, LED BY MATRIARCHS WHO *keep the families together* THROUGH DROUGHTS AND TRIALS, AS WELL AS TIMES OF PLENTY. AT THE HEART OF THIS SCULPTURE IS A STALWART CHAMPION, FILLED WITH PEACE AND CAPABLE OF GIVING BEYOND MEASURE. *Pearaphant* REPRESENTS THE EPITOME OF BIG-HEARTED GOODNESS FOUND IN A LOVING HOME, WHERE WE WELCOME FRIENDS AND FAMILY TO OUR HEARTH AND HEARTS.





THE EVOLUTION OF NATIVE FRUITS  
HAWLEY

FLORINA FLORINA FLORINA



*Pearaphant* SPECIFICATIONS

HEIGHT	11.25 IN	WIDTH	5.00 IN
DEPTH	6.75 IN	<i>weight</i>	6.00 LBS





MAY THE PEAR-SHAPED  
**GODDESS OF LOVE**

SIT ON YOUR HEART LIKE AN ELEPHANT,

*until*  
YOU FIND YOUR  
SOUL MATE.

MAY YOUR LIFE

*be sweet,*

YOUR SECRETS

*juicy,*

AND YOUR SKIN

**THICK.**

“For it was not

into my ear

you *whispered,*

but into my heart.

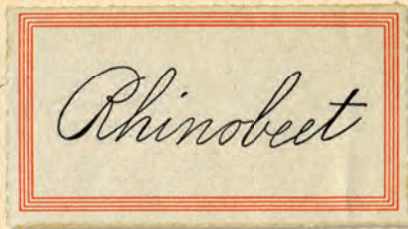
It was not

my lips you kissed,

but my *soul.*”

JUDY GARLAND





THERE IS NOTHING SUBTLE ABOUT A RHINOCEROS OR A BEET. THE IMMEDIATE STRENGTH AND INTENSITY OF BEET AND BEAST COLLIDE IN *Rhinobeet*, A THOUGHTFUL SCULPTURE THAT BURNS WITH PASSION AND THE PROPENSITY TO SURPRISE. THE HORN OF THE RHINOCEROS BRINGS TO MIND VISIONS OF STORMING HOOVES, PRIMITIVE BATTLES AND ANCESTRAL LANDS. A SYMBOL OF *strength and fertility*, IT EXEMPLIFIES ACTION, POWER AND MOVEMENT. THE BEET, IN CONTRAST, SEEMS TO STAND STILL. A HARDY ROOT VEGETABLE KNOWN FOR ITS STRONG FLAVOR AND POTENT COLOR, IT MAY NOT HAVE THE POWER OF MOVEMENT — BUT IT NEVERTHELESS LEAVES A MOVING IMPRESSION. SEEN AS STUBBORN AND EVEN HARSH, THE BEET HAS A REPUTATION THAT REMINDS US OF TOUGHING IT OUT THROUGH ROUGH TIMES. THE DICHOTOMY CREATED BY THE FUSION OF THESE TWO DISPARATE FORMS COMBINES THE QUALITIES OF STRENGTH AND SINGLE-MINDEDNESS WITH UNEXPECTED SWEETNESS AND WARMTH. *Rhinobeet* IS A GENTLE GIANT NOT TO BE TRIFLED WITH, A STURDY SURVIVOR OF TRIALS ANCIENT IN ORIGIN. DETERMINED AND PURPOSE-DRIVEN, ITS RESOLVE IS SHED SOONER OR LATER, REVEALING A CRIMSON PASSION. WE ALL KNOW SOMEONE LIKE THIS — COULD IT BE YOU?







*Rhinobee* SPECIFICATIONS

HEIGHT	3.25 IN	WIDTH	17.00 IN
DEPTH	8.00 IN	<i>weight</i>	6.50 LBS





TO BE  
SUCCESSFUL,

ONE MUST HAVE *the hide*  
OF A RHINOCEROS AND THE  
*concentration* OF A BEET.

WITH  
A *Rhino*,  
THERE'S NO  
INDECISION.

WHEN HE CHARGES,  
HE PUTS  
*everything*  
INTO IT.

“The beet  
is the most  
*intense*  
of  
vegetables.”

TOM ROBBINS



## *Strutting Artichoke*

WITH BOTH FEET ON THE GROUND AND PLUMAGE DISPLAYED PROUDLY FOR ALL TO SEE, *Strutting Artichoke* GREETES EACH NEW DAY WITH CONFIDENCE AND A TOUCH OF WHIMSY. PAIRING THE LEGS AND FEATHERS OF A ROOSTER WITH THE DISTINCTIVE SHAPE OF AN ARTICHOKE, IT SYMBOLIZES THE SELF-ASSURED BOLDNESS OF BELIEVING IN ONESELF, AS WELL AS THE IMPORTANCE OF NOT TAKING ONESELF TOO SERIOUSLY. THIS SCULPTURE IS ALL ABOUT LAUGHTER, FUN, AND INDIVIDUALITY. HAPPINESS IS HEALTHY – AND BEING TRUE TO ONESELF IS THE ONLY WAY TO BE. THE ROOSTER’S GAIT DRAWS THE WORLD TO HIS STAGE, AND THE SUN’S RISING SIGNALS HIM TO LOUDLY WAKE THE WORLD AROUND HIM. HE REPRESENTS A CALL TO ACTION, *a reminder to wake up* AND RESPOND TO OUR TRUE PURPOSE. MEANWHILE, THAT SAME SUN QUIETLY ALERTS THE ARTICHOKE TO KEEP GROWING, BUILDING LAYER UPON LAYER OF COMPLEXITY. THIS STRUCTURE MIRRORS OUR OWN LIVES, EVER LEARNING, GROWING, AND BECOMING MORE COMPLEX. *Strutting Artichoke* TELLS US TO BE PROUD OF WHO WE ARE TODAY, BUT NEVER STOP GROWING. IT ALSO HINTS THAT LIFE IS MORE COMPLEX THAN WE THINK. IT’S ONLY BY LOOKING DEEPLY WITHIN OURSELVES THAT WE WILL DISCOVER THE DELIGHTFUL SECRET OF INNER HAPPINESS.





VOL. XX. HAND-BOOKS OF  
PRACTICAL GARDENING

THE BOOK OF  
RARER  
VEGETABLES

BY  
GEORGE WYTHES V.M.H.  
& HARRY ROBERTS

BIRDS OF  
CALIFORNIA



*Strutting Artichoke* SPECIFICATIONS

HEIGHT	11.50 IN	WIDTH	8.50 IN
DEPTH	11.00 IN	<i>weight</i>	10.25 LBS





IN LIFE, IT'S SOMETIMES  
**NECESSARY**

*to peel away*  
THE OBVIOUS

TO FIND THE *fruit* WITHIN.

“ A DAY  
*without laughter*  
IS A DAY WASTED.”

*CHARLIE  
CHAPLIN*

“ A woman  
is like an artichoke,  
you must  
*work hard*  
to get to her heart.”

INSPECTOR  
JACQUES CLOUSEAU







## IN CONCLUSION



THE *Wild Crops Collection* WAS CONCEIVED AS A MEANS OF REFLECTING ON THE INTIMATE AND FUN EXPERIENCE OF CREATING A MEAL TO SHARE WITH FAMILY AND FRIENDS. AND THERE WAS ONE MORE GOAL: TO REFLECT THE INWARD SIGNIFICANCE OF THE ONE DISPLAYING THE SCULPTURE.



IMAGINE SEVEN WORKS OF ART, A VERITABLE MENAGERIE, CREATING A SENSUAL SMORGASBORD UPON WHICH TO FEAST THE EYES AND IMAGINATION, WITH PERSONALITIES MINGLING AS THEY ARE SHARED. THE *Wild Crops Collection* IS THE PERFECT WAY TO FORGE AN EVENING OF JOY AND REFLECTION, AS THESE COMPLEX CREATIONS COME TO LIFE. YOU WILL ENJOY THEM TIME AND TIME AGAIN, WHETHER THROUGH SOLITARY CONTEMPLATION, OR AS CENTERPIECES TO GATHERINGS ENHANCED BY THEIR UNUSUAL PRESENCE. EVEN BETTER IS THE OPPORTUNITY TO SHARE THEM WITH GENERATIONS TO COME. AS THEIR ANCESTRIES ARE RETOLD, AND THEIR PERSONALITIES DISSECTED IN CHANGING WAYS, THEIR HISTORIES AND MYTHOLOGIES WILL CONTINUE TO GROW.



TAKE THIS MOMENT IN TIME TO INVITE THE *Wild Crops Collection* INTO YOUR LIFE, AND WATCH AS THEY RAMBLE AND SOAR, BECOMING PART OF YOUR LEGACY AND CREATING THEIR OWN.



## ABOUT THE ARTIST

FROM PUBLIC COMMUNITY SPACES TO PRIVATE HOMES, SCULPTOR BRAD OLDHAM HAS ELEVATED MANY ENVIRONMENTS WORLDWIDE WITH HIS SITE-SPECIFIC ARTWORKS, AND HAS EARNED LOCAL AND NATIONAL RECOGNITION. IN 2011, THE TEXAS SOCIETY OF ARCHITECTS RECOGNIZED OLDHAM WITH THE PRESTIGIOUS ARTISAN AWARD, AND HE WAS HERALDED AS THE ARTIST/CRAFTSMAN OF THE YEAR BY THE AMERICAN INSTITUTE FOR ARCHITECTS. IN 2010, THE AMERICANS FOR THE ARTS INCLUDED HIS \$1.4 MILLION INSTALLATION, *The Traveling Man*, IN ITS PRESTIGIOUS YEAR IN REVIEW PROGRAM.

OLDHAM'S METICULOUS CRAFTSMANSHIP, PASSION, AND CREATIVITY ARE CAST INTO EVERY SCULPTURE HE CREATES, FROM LARGE-SCALE SCULPTURES THAT ENHANCE THE COMMUNITIES IN WHICH THEY RESIDE, TO THE COLLECTIONS OF SCULPTURES CREATED EXCLUSIVELY FOR BRAD OLDHAM INTERNATIONAL. OLDHAM'S LIST OF SCULPTURES IS LONG, AND HIS WORK MAY BE VIEWED AROUND THE GLOBE. HIS PUBLIC PIECES ON DISPLAY INCLUDE SCULPTURAL WORK AT THE CENTER FOR BRAIN HEALTH IN DALLAS, TEXAS, HIS WORK ENTITLED *Whimsy* IN THE CITY'S EXALL PARK, AND HIS 28-PIECE, INDOOR-OUTDOOR INSTALLATION AT THE LUMEN HOTEL. IN 2007, THE ARTIST'S WORK WAS FEATURED IN A MONTH-LONG INSTALLATION ON *Good Morning America*. COMMISSIONS FOR OLDHAM'S WORK HAVE BEEN MUCH IN DEMAND IN NEW MARKETS. LAST YEAR, HE PROVIDED SCULPTURE FOR THE ENTRANCE OF MITCHELL PARK LIBRARY IN PALO ALTO, CALIFORNIA, THE WAYNE GRETZKY SPORTS CENTRE IN BRANTFORD, ONTARIO, AND THE BAKU FLAME TOWERS IN BAKU, AZERBAIJAN.

AN ARTIST WITH THE MIND OF AN ENGINEER, OLDHAM'S TALENTS EXTEND BEYOND SCULPTURE AND DESIGN INTO OPERATIONS, FABRICATION, MANUFACTURING, AND INSTALLATION. EXAMPLES OF HIS ARTISTIC COMPREHENSIVE SKILL SET CAN BE SEEN IN RESTAURANTS, COMMERCIAL CENTERS, CASINOS, AND HOTELS. IN LAS VEGAS ALONE, HIS PIECES ARE ON DISPLAY IN THE PALAZZO, HARD ROCK CAFÉ, THE PALMS CASINO, THE BELLAGIO, AND WYNN DESIGN AND DEVELOPMENT LOCATIONS. RECOGNIZABLE RESTAURANTS SUCH AS EMERIL'S IN NEW ORLEANS, ATLANTA, AND LAS VEGAS AND BOBBY FLAY'S MESA GRILL LOCATIONS IN THE BAHAMAS AND NEW YORK CITY, ARE PROUD TO HAVE OLDHAM'S WORK AS PART OF THEIR AMBIENCE.











## THE WILD CROPS TEAM

EVERY SCULPTURE IN THE *Wild Crops Collection* TELLS A STORY. AND LIKE MOST STORIES, THEY ARE ROOTED IN TRUTH, AND HAVE GROWN THROUGH COLLABORATION, CONVERSATION AND IMAGINATION. BRAD OLDHAM AND HIS WIFE, CHRISTY COLTRIN, WORKED TOGETHER TO DEVELOP THE *Wild Crops Collection*. THE COUPLE CO-CREATED THE CONCEPT BY BRAINSTORMING IDEAS OVER BREAKFAST. DURING THE TWO YEARS THE COUPLE WORKED TO CREATE THE *Wild Crops Collection*, THEY HAD REGULAR DISCUSSIONS ABOUT THE EXPERIENCES AND ENCOUNTERS THAT MAKE EVERY PERSON UNIQUE AND WHOLE. THE SEED OF EACH NEW IDEA GREW AS THEY CONTINUED TO SHARE STORIES, SKETCHES, TOASTS AND DREAMS ABOUT HOW SCULPTURE CAN ELEVATE DAILY LIFE. BRAD SCULPTED EACH ARTWORK, WHILE CHRISTY DEVELOPED THE STORIES THAT ACCOMPANY THEM.

WITH TWENTY YEARS OF EXPERIENCE MARKETING HIGH-END COMMERCIAL REAL ESTATE PROJECTS AND WORKING WITH TOP LUXURY AUTOMOTIVE COMPANIES, CHRISTY COLTRIN BRINGS BOTH BUSINESS EXPERTISE AND CREATIVE TALENT TO BRAD OLDHAM INTERNATIONAL. SHE JOINS BRAD IN RUNNING THEIR ART STUDIO AND COLLABORATING ON CONCEPTUAL PUBLIC ARTWORK. WHILE BRAD SCULPTS, CHRISTY WRITES. AFTER THE STORIES AND SCULPTURES ARE COMPLETED, THE TWO MEDIUMS BLEND BEAUTIFULLY, RESULTING IN AN ENHANCED ARTISTIC EXPERIENCE.

BOTH BRAD AND CHRISTY ARE PASSIONATE ABOUT MAKING SCULPTURE ACCESSIBLE FOR INDIVIDUALS, AS WELL AS THE GENERAL PUBLIC. WHETHER THEY ARE CREATING SCULPTURE FOR PUBLIC SPACES OR SELLING SMALLER PIECES DIRECTLY TO COLLECTORS, THEY WOULD LIKE TO SEE MORE PEOPLE INTERACT WITH THIS ENGAGING MEDIUM MORE OFTEN. THEIR ULTIMATE GOAL IS TO CREATE ARTWORK AND STORIES THAT BECOME AS PERSONAL TO OTHERS AS THEY ARE TO THE ARTISTS; AND THEY WANT YOUR VOICE TO BECOME PART OF THE CONVERSATION, TOO. *Please let us know what you think about the Wild Crops Collection.*



THE *Wild Crops Collection* CONCEPT IS DEDICATED TO NAOMI BROWN WELLER, FOR WHOM THE EXPRESSION OF THE WORLD'S LOSS CANNOT BE CAPTURED BY ART OR WORDS, AND WHOSE 70 YEARS ON EARTH WERE TOO FEW. THIS COLLECTION OF SCULPTURE CELEBRATES HER LOVE OF STORY AND OPENING HER HOME TO FAMILY AND FRIENDS. *Here's to a lifetime of looking up to you, Mom!*

*Sculptor* BRAD OLDHAM

*Collaborator and Author* CHRISTY COLTRIN

*Photography* SHAYNA FONTANA, LAUREN MCCLURE AND META NEWHOUSE

*Photo Manipulation* NIKKI ROMERO

*Creative Direction* META NEWHOUSE

*Design* META AND MICHAEL NEWHOUSE

+ THANK YOU TO BRAD AND CATHY ALMOND, AND TO FAYE BRIGGS, FOR PROVIDING BEAUTIFUL HOMES FOR *Wild Crops Collection* SCULPTURES TO BE PHOTOGRAPHED FOR THIS BOOK.

+ AND THANK YOU TO BEATRICE MORROW, ANABELLE OLDHAM AND TOM LINDSAY FOR BEING SUCH ACTIVE CONVERSATIONALISTS DURING OUR FATEFUL PANCAKE BREAKFAST, WHEN THE SEEDS FOR THIS COLLECTION WERE PLANTED.



WHEN IT CAME TIME TO SELECT THE DESIGN PARTNER FOR THE *Wild Crops Collection* BOOK AND PACKAGING, BRAD AND CHRISTY REACHED OUT TO LONG-TIME FRIENDS AND PAST COLLABORATORS, META AND MICHAEL NEWHOUSE. THE NEWHOUSE TEAM PROVIDED THEIR UNIQUE BLEND OF HIGH DESIGN AND STYLE TO THE MATERIALS ALONG WITH A DISCERNABLE WARMTH, DESPITE WORKING THROUGH THE BITTER, WINTERY CONDITIONS IN BOZEMAN, MONTANA.

*About the Cover* THE COVER IMAGE AND THE INTRODUCTION IMAGE FOR EACH SCULPTURE WERE CONCEPTED, PHOTOGRAPHED, AND STYLED BY META AND MICHAEL NEWHOUSE. THESE IMAGES HINT AT THE DARWINIAN BOTANIST, WHO MIGHT HAVE FIRST DISCOVERED THESE CREATURES WHILE JOURNEYING TO THE ENDS OF THE EARTH. LUCKY FOR YOU, YOU DON'T HAVE TO GO NEARLY AS FAR. A VISIT TO [shopbradoldham.com](http://shopbradoldham.com) WILL DO THE TRICK.